

ILLUMINATE TO COMMUNICATE



So, what's all the excitement about? - It's just a lightbox!

Yes, but this one is special, it's tool-free and can be built in less than ten minutes due to the intuitive design. All the parts slot together, which is easy to do as they are numbered, even the LED's are pre-assembled! The base has twist out feet and once the horizontal bar is in place, the SEG graphics simply push-fit into the channel.

Fit the power cable underneath and you're ready to go!



Tool-free fast assembly,
build and display in less
than 10 minutes



Powerfully-bright and
efficient low voltage LED
lighting, that will save
energy and won't overheat



Packs away in it's own
protective box with carry
handle making it easy to
transport or store



Great cost effective
solution and exceptional
value for money

Padded compartmented travel
/ storage box comes with full
instructions and carry handle.



Ideal for:

- Roadshows
- Product Launches
- Events
- Retail
- Receptions
- Interiors
- Exhibitions
- Meeting Rooms



illumiGo One is the sleekest profile lightboxes we have within the illumiGo family.

At just 60mm deep and the first in the range to be illuminated with a backlit solution, this clever panel can be conveniently rolled for easy storage and quick deployment. At 850mm wide it is the perfect stepping-stone from a roller banner to a full backlit lightbox solution.

The backlit rollable panel has preinstalled LED's that ensure the display graphic is vibrant and impactful. The panel is inserted into the frame in the same way as a standard SEG graphic making it easy to assemble. It also has the option to have a rear facing unlit textile graphic if required.



Toolless locking mechanism



Double rear channel for non-lit rear graphic



Single Sided Back Lit stand

Padded compartmented travel / storage box comes with full instructions and carry handle.



Ideal for:

- Conferences
- Roadshows
- Product Launches
- Exhibitions



illumiGo Retail is a portable 1600 x 600mm double-sided lightbox with white powder coated gloss finish and a pre-assembled single foot.

Frame parts slot together using an easy-to-build numerical system and all cabling is discreet thereby ensuring simplicity when constructing. IllumiGo Retail can be assembled in just a few minutes - no tools needed! Specifically designed for the retail environment because of its size and stability.



Silicon edged graphics fit neatly into the frame channel for quick deployment.



Two preinstalled LED light strips situated at the top and bottom of the extrusion ensure the lightbox is vivid and vibrant.



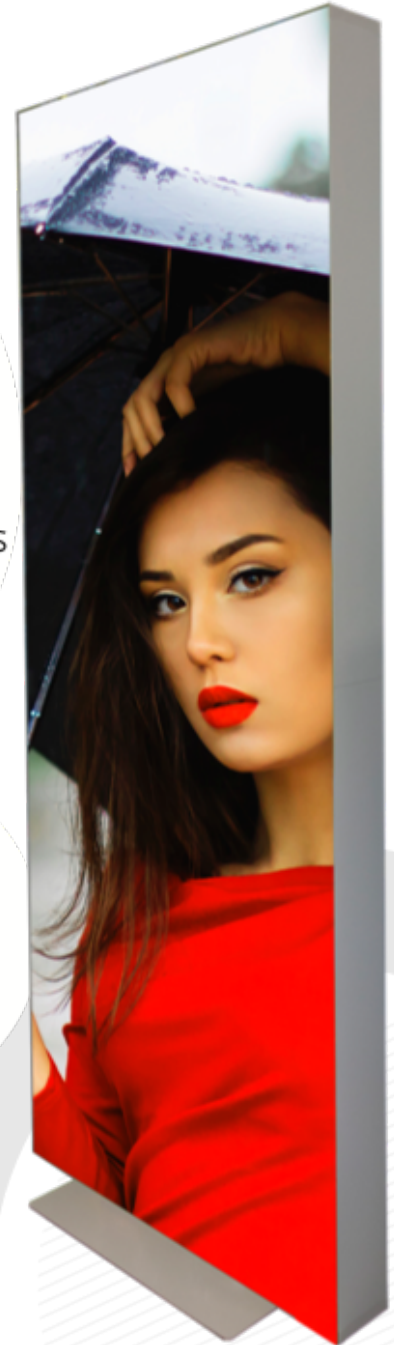
The power port is discreetly positioned under the base of the unit, allowing for multiple lightboxes to sit flush together side-by-side.

The lightbox comes in its own branded box, it is lightweight (11.33kg) and can deploy in minutes thanks to the toolless 'plug and play' design.



Ideal for:

- Store entrances
- Event zones
- Window displays
- Free-standing lightbox displays
- Store navigation signage



Perfect for standing out in a crowd, the stylish LED lit double-sided iLLUMiGO™ Counter.

This versatile and quick to set-up counter lightbox is a great all-rounder not only at events but in retail environments from shopping centres to pop-up shops.

Standing 1045mm from the floor with a countertop size of 1040mm by 420mm this easy assemble unit has a two-part countertop that is secured using a pair of twist out top locators and locking screws. Building the unit is intuitive and tool-free as all the parts are numbered and simply slot together.



The Counter is illuminated by a set of pre-fitted LED lights that are located at the base.



SEG graphics fit into the frame channel and the power cable inserts under the base.



The Counter is designed to be deployed in less than 10 minutes.

Padded compartmented travel / storage box comes with full instructions and carry handle.

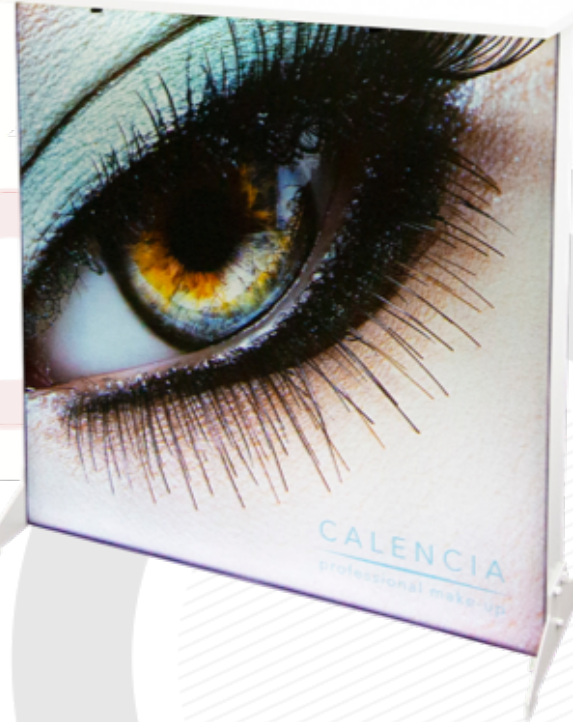


Ideal for:

- Events
- Retail environments
- Shopping centres
- Pop-up shops

iLLUMiGO™ Counters also benefit from being:

- Easy to transport or store as it packs away in its own protective compartmented box.
- Efficient, energy saving LED lighting that is powerfully bright but low voltage, so it won't overheat.
- Simple, fast, tool-free assembly - build in less than 10 minutes.
- Cost effective counter solution that's exceptional value for money.





Pure Media, Unit 36 Chapman Way, Tunbridge Wells, Kent. TN2 3EF. 01892 570064, hello@pure-media.co.uk